



Part:	Velocity stack assembly - Supersport
P/N:	SPSS-300SS
Model:	Kawasaki Ninja 300 (2013 - 2017)
Doc:	Assembly and installation instructions, v0.1

WARNING: For racing vehicle use only! Our products are intended to be used only on racing vehicles on closed courses and are not for use on public roads. It is the user's responsibility to ensure that all Spears Enterprises LLC. installation and assembly instructions are followed explicitly. Spears Enterprises LLC recommends that installation be performed by a trained, professional technician. The User recognizes that any alteration or modification to any motorcycle and/or improper installation may increase the risk of serious injury, accident or death and may also render the motorcycle illegal for public road use.

Parts included: <ul style="list-style-type: none">• 2x Snap Stacks™ velocity stacks• 2x Intake manifolds• 1x Rubber Plug• 1x Air Box Lid Spacer	Tools required: <ul style="list-style-type: none">• Phillips screwdriver• 4mm Allan Tool	Upgrade products if desired: <ul style="list-style-type: none">• Air filter upgrade: MWR race filter recommended (Part number SP02—300MWR at www.spearsenterprises.com)
---	--	---

Ninja 300 Airbox Assembly



Top cover screws
(12x)

Stock intake manifolds
with clamps

Step 1: Remove the 8x top cover screws and the top cover, set aside. Remove the air filter, set aside. Remove stock clamps.

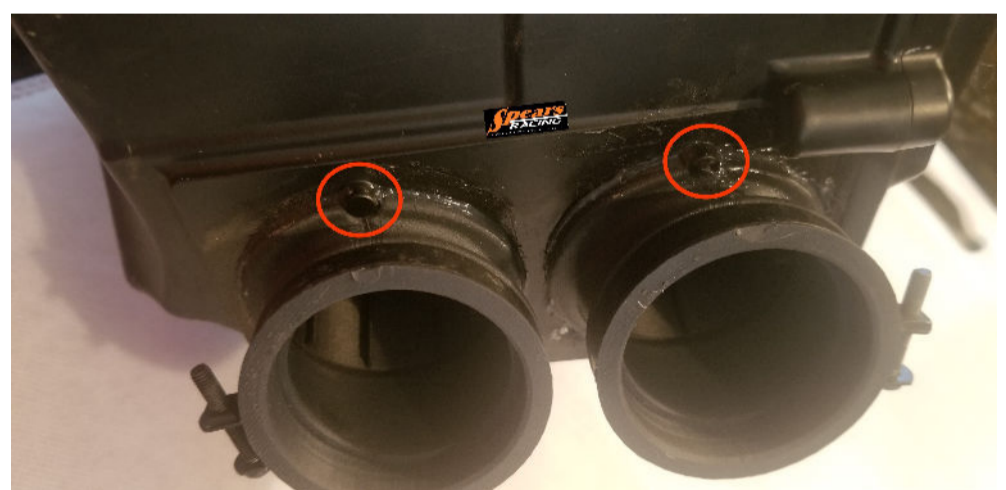


Figure 1: New manifold alignment tabs mated with the airbox alignment tabs.

Step 2: Remove the stock velocity stacks.

Step 3: Install the new manifolds in the airbox, lining up the manifold alignment tabs and the airbox alignment tabs (see Figure 1 above).



Part:	Velocity stack assembly - Supersport
P/N:	SPSS-300SS
Model:	Kawasaki Ninja 300 (2013 - 2017)
Doc:	Assembly and installation instructions, v0.1

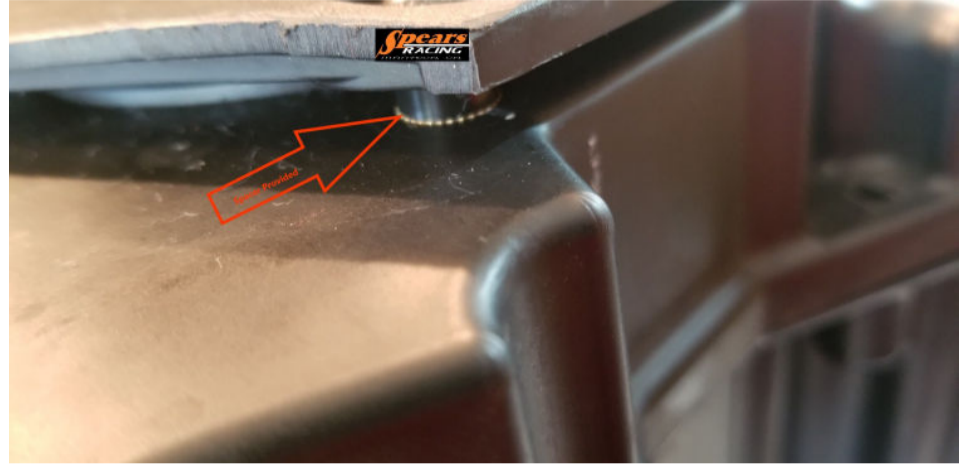
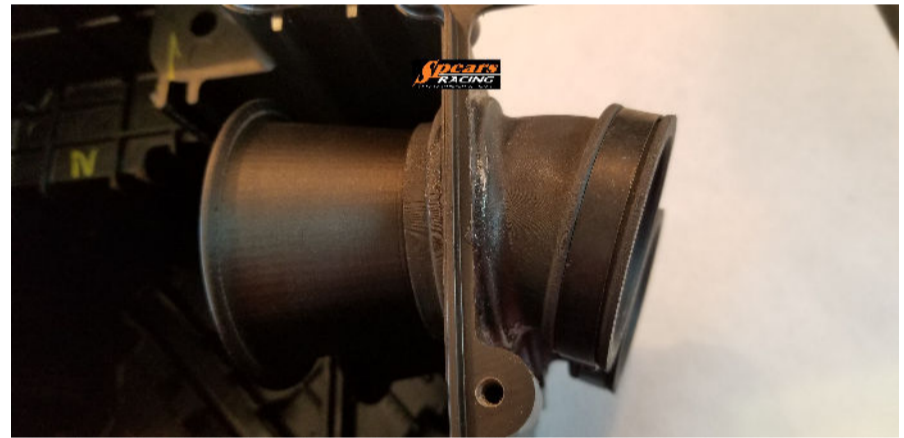


Figure 2: Spacer Installed under OEM Filter Door

Step 4: Re-install the stock manifold clamps, Install Provided spacer under one(1) corner of air box for more filtered air to enter



Step 5: Install the Snap Stacks™ velocity stacks into the intake manifolds, be sure they are fully seated. Replace the air filter and top cover.