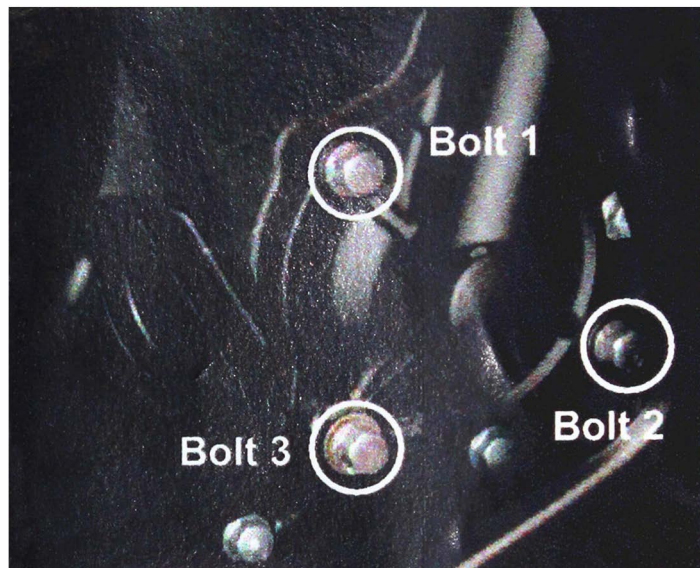


# FITTING INSTRUCTIONS

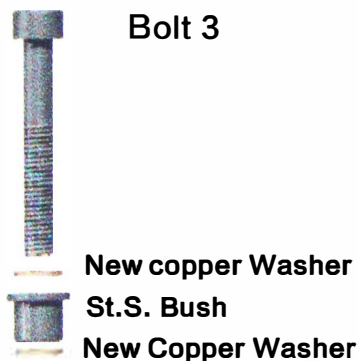
TO BE FITTED BY A QUALIFIED TECHNICIAN.

Yamaha R3 2015 STOCK – Secondary Water Pump cover. Part No. SP320–Case Set

1. Remove Fairing.
2. Remove 3 existing bolt from the stock water pump cover, (top picture) Bolt 1,2,3 , copper washer at Bolt 3. Place the
3. Secondary Washers Pump Cover over the stock cover.
4. Assemble 3 replacement bolts loosely in the correct positions as shown.placing the two supplied Copper Washer on Bolt 3 as show in Fig. 1 add silver washers on the others
5. Tighten bolts to 10Nm as per Manufacturer's recommendations. DO NOT OVERTIGHTEN.
6. Replace fairing.

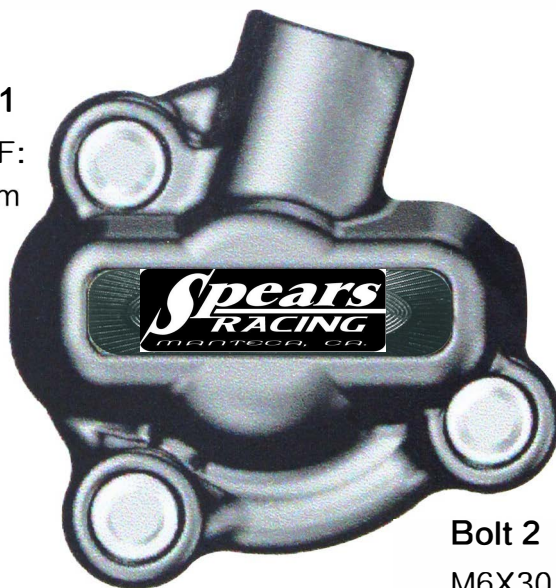


**Fig. 1**



**Bolt 1**

M6X30 HHF:  
10Nm



**Bolt 2**

M6X30 HHF:  
10Nm

**Bolt 3**

M6X30 HHF:10Nm  
2 x M6WCU