



# HM M3 Dash

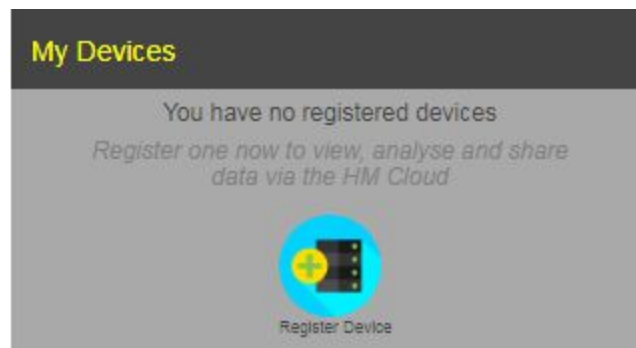
Quick Setup Guide

---

The HM M3 Dash has been designed to be very simple to use.

In a few short steps, you will be able to enjoy the features of your new purchase.

- Step 1:** Log on to [www.hmdash.com](http://www.hmdash.com) to create your HM Cloud account.
- Step 2:** Register your new HM M3 Dash to your account via the options on the screen.



You will need to plug in your supplied USB key.

- Step 3:** Download and install the HM Launcher software.
- Step 4:** Right click on the small HM icon on your status bar, this will bring up a small menu.

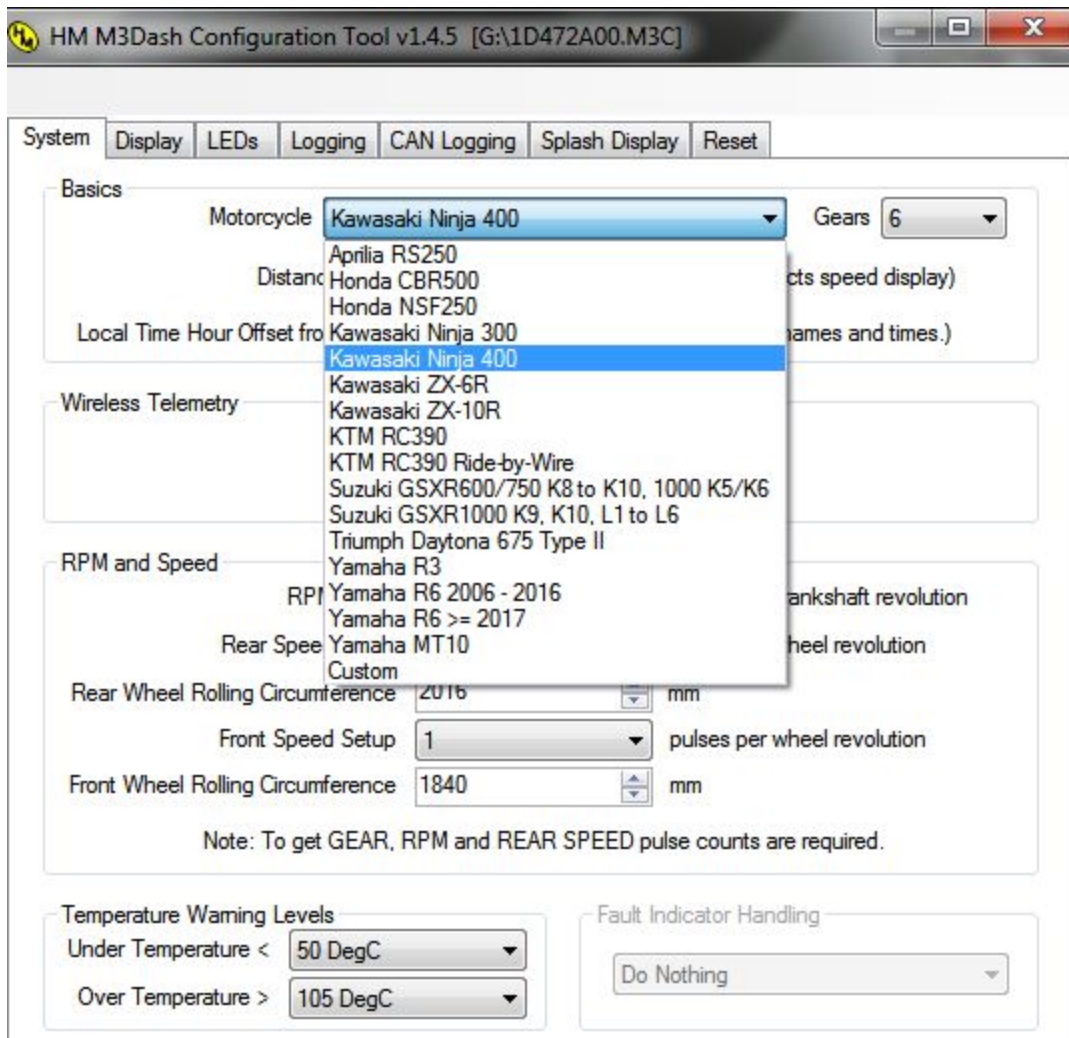


---

[Support@hmquickshifter.com](mailto:Support@hmquickshifter.com) | Tel: +44 (0)1795 429168 | [Info@hmquickshifter.com](mailto:Info@hmquickshifter.com)

HM Quickshifter (UK) Ltd, B3 Brickmakers Ind Est, Castle Road, Sittingbourne, ME10 3RL UK

Select configuration tool. Here you need to select your model bike and any other changes you would like to make to you HM M3 Dash, i.e left light to flash blue when on your fastest lap.



Once you have done this, the information will be synced to you USB key.

**Step 5:**

Plug the USB key back into your HM M3 Dash and this will automatically update your M3 dash with all your settings and trackmaps.

**Step 6:**

Go set your fastest lap and enjoy.